

FLASH

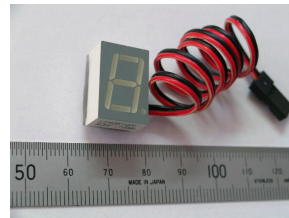
Digital Voltage Display *Mk 2*

The RMG *Flash 2* displays the value of the voltage supplied via its power supply leads in numeric form on a seven segment digital LED display. It can be used to display any DC voltage source up to 12.40 volts. For RC applications it can be connected directly to a battery pack or to a spare channel of an RC receiver. In the case of connection to an RC receiver, it will display the value of the voltage supply to the servos connected to the receiver. In the case of direct connection to a battery it will display the value of the voltage from the battery before any BEC or other voltage regulator.

The *Flash 2* displays voltage by flashing the most significant digit first followed by subsequent digits including the the decimal point. Between 3.2 and 3.79 volts, the letter *L* will be displayed. From 3.80 to 12.40 volts will be displayed in 0.01 volt increments. Above 12.40 volts the letter *H* will be displayed.

Features

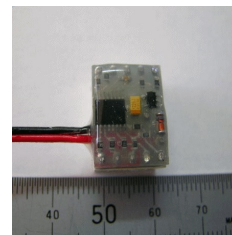
- Displays actual voltage in numeric form.
- Wide voltage range
- Compact lightweight design
- 300 mm JR/Hitec connector lead
- Reverse polarity protected
- Water proof
- New improved high resolution and accuracy
- Displays lowest value sampled per cycle



Display (top) view

Specifications

- | | |
|-----------------------------|------------------------|
| • Min displayed volts | 3.80 v |
| • Max displayed volts | 12.40 v |
| • Max allowed volts | 13.60 v |
| • Min operating volts | 3.20 v |
| • Resolution | 0.01 v |
| • Accuracy | +/- 0.02 v |
| • Sampling / display period | 2.5 sec |
| • Digit flash time | 160 msec |
| • Average power consumption | 35 mW |
| • Peak current | 85 mA |
| • Average current | 10.7 mA |
| • Digit height | 14.2 mm |
| • LED colour | Super Bright Red |
| • Luminous Intensity | 24 mcd |
| • Dimensions | 19.05 x 12.7 x 11.8 mm |
| • Weight | 6 gm |



Circuit (rear) view